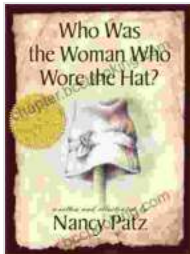


Who Was The Woman Who Wore The Hat?

Prologue: A Compelling Enigma

Within the annals of art history, countless masterpieces captivate our imaginations with their enigmatic subjects and hidden meanings. Among these, one painting stands out for its intriguing central figure: a woman wearing a large, brimmed hat. Her gaze meets the viewer's, as if inviting us into a world of mystery and intrigue.



Who Was the Woman Who Wore the Hat? by Nancy Patz

★★★★★ 5 out of 5

Language : English

File size : 2754 KB

Screen Reader : Supported

Print length : 48 pages

Lending : Enabled



For centuries, scholars and art enthusiasts alike have debated the identity of this enigmatic woman. Was she a wealthy noblewoman? A courtesan? A symbol of female empowerment? Or perhaps a representation of a deeper social commentary?

Chapter 1: Uncovering the Clues

To unravel the enigma, we must delve into the painting's details. The woman's attire reveals clues to her socioeconomic status. Her elaborate gown and intricate jewelry suggest wealth and opulence. However, her

direct gaze and slightly parted lips hint at a quiet confidence and intelligence.

The hat itself is a striking feature. Its wide brim casts a shadow over her face, creating an air of mystery. Yet, the vibrant colors and intricate feathers adorning it draw attention to her presence. Is this hat a symbol of her beauty, her social standing, or perhaps something more?

Chapter 2: Historical Context and Interpretation

The painting was created during a period of significant social and cultural change. Women were beginning to assert their voices and challenge societal norms. As such, some scholars believe that the woman in the hat represents a symbol of female empowerment. Her direct gaze and confident demeanor suggest a departure from традиционные roles assigned to women.

Others argue that the painting is a social commentary on the objectification of women. The woman's beauty is presented as a commodity, to be admired and consumed by the viewer. The hat, with its ornate feathers, could be seen as a metaphor for the trivial ways in which women were often valued.

Chapter 3: The Artist's Perspective

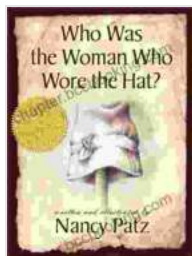
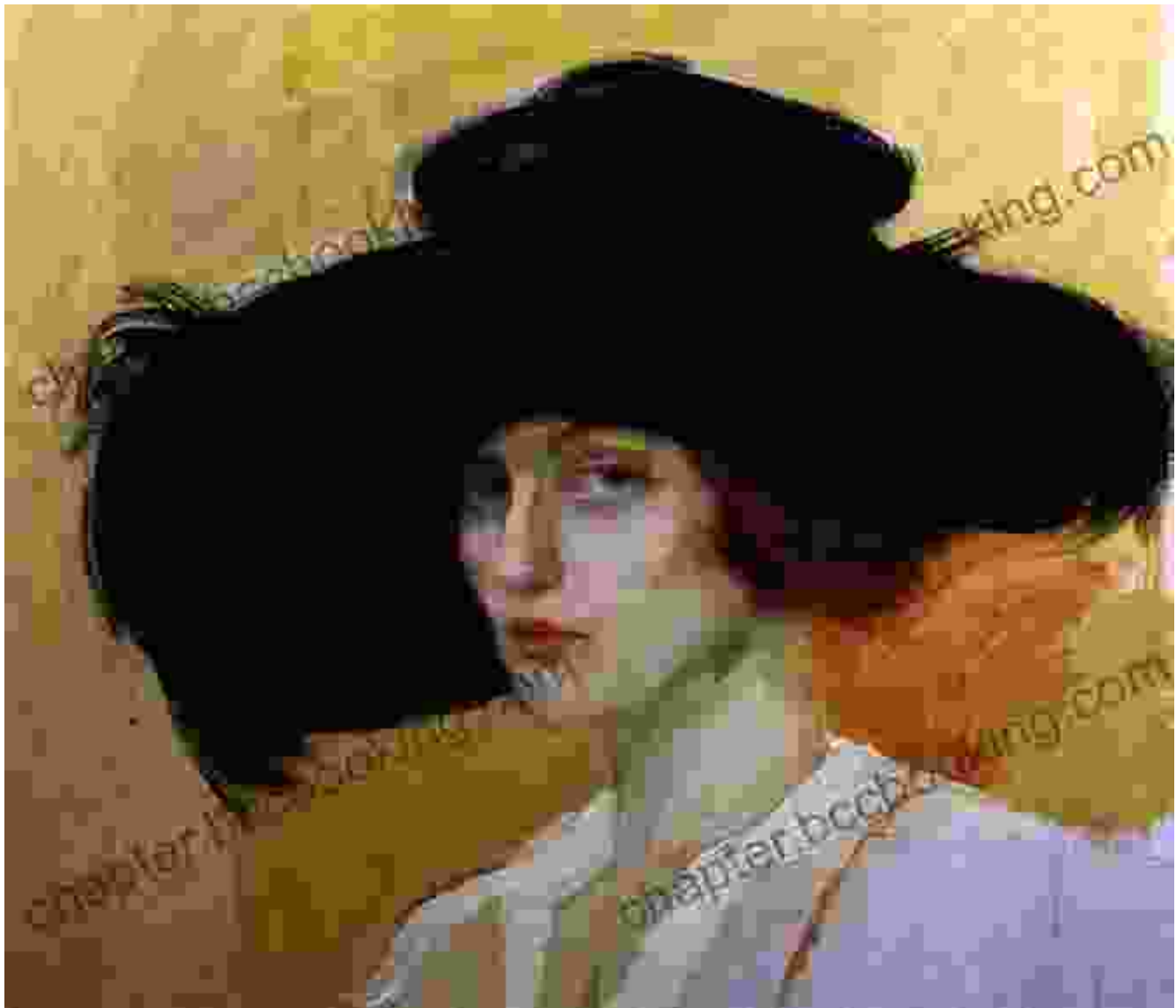
The artist who created the painting, an enigmatic figure themselves, provides further clues to the enigma. Their use of chiaroscuro, with the woman's face illuminated against a dark background, creates a sense of drama and mystery. The brushstrokes are deliberate and precise, capturing the woman's every nuance and emotion.

By examining the artist's oeuvre, we can gain insights into their motivations. Known for their social commentary and fascination with the human condition, it is possible that the artist intended the woman in the hat to be a reflection of the changing societal attitudes towards women.

Epilogue: Enduring Legacy

The identity of the woman who wore the hat may forever remain a mystery. However, the painting itself has become an enduring symbol of female empowerment, social commentary, and the enduring power of art to spark debate and inspire interpretation.

Through its enigmatic subject and thought-provoking symbolism, "Who Was The Woman Who Wore The Hat?" invites us to question our assumptions, explore history's hidden narratives, and appreciate the transformative nature of art.



Who Was the Woman Who Wore the Hat? by Nancy Patz

★★★★★ 5 out of 5

Language : English

File size : 2754 KB

Screen Reader : Supported

Print length : 48 pages

Lending : Enabled

FREE

DOWNLOAD E-BOOK





Uncover the Thrilling Mystery in "It Ain't Over, Cole Srexx"

Prepare yourself for a literary journey that will leave you breathless and yearning for more! "It Ain't Over, Cole Srexx" is a gripping mystery...



How to Stay True to Yourself and Stand Out From the Crowd

In a world that constantly bombards us with messages telling us who we should be and what we should do, it can be difficult to stay true to ourselves....